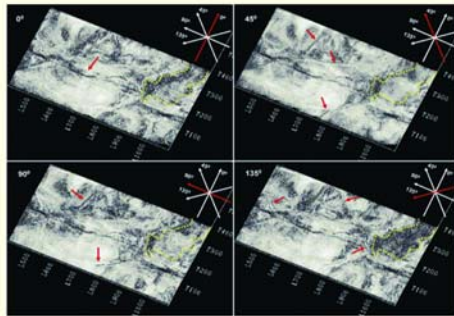
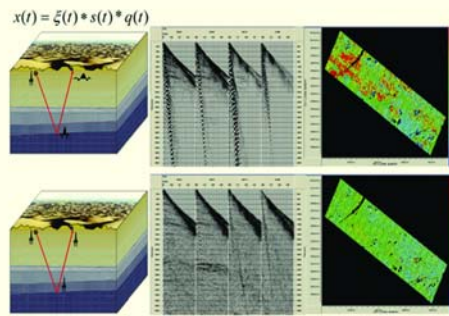


PAI LRC
An integrated land reservoir characterization solution

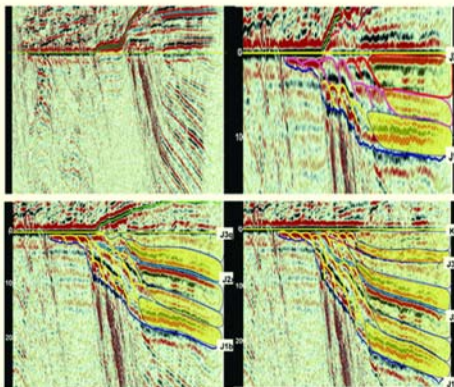
PAI-LRC provides an integrated solution for land reservoir characterization based on 3D, 3.5D, 4D, borehole and MC seismic. It helps effectively enhance production of reservoirs whose thickness is less than ¼ wavelength.



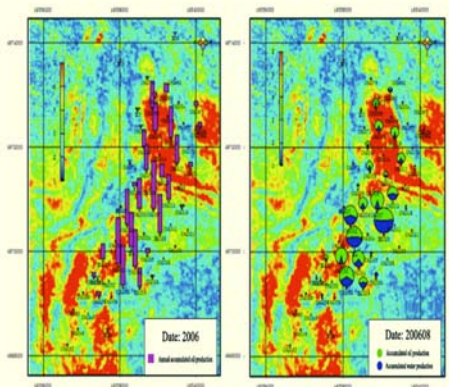
Wide azimuth seismic acquisition



RAP processing



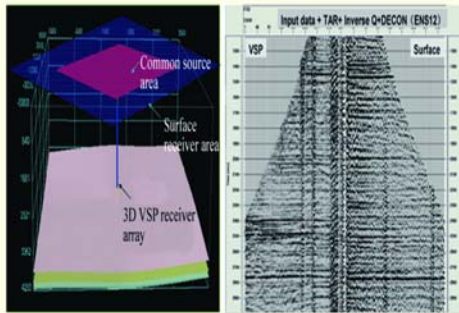
Relative calibration and structural evolution interpretation



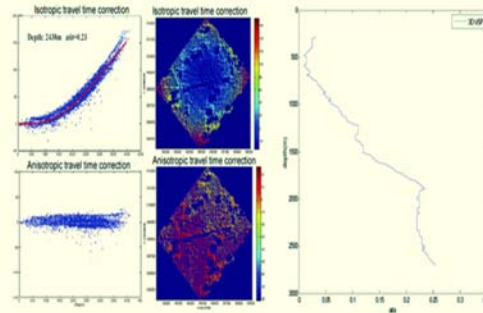
Comprehensive 3.5D seismic exploration



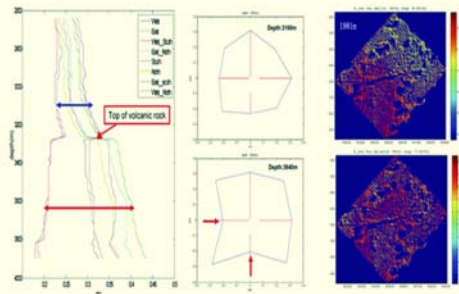
中国石油东方地球物理公司
BGP Inc., China National Petroleum Corporation



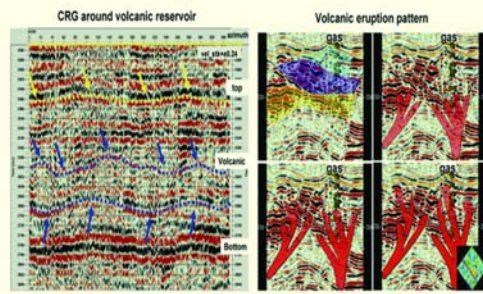
United acquisition and processing of Full-Azimuth 3D and 3D VSP



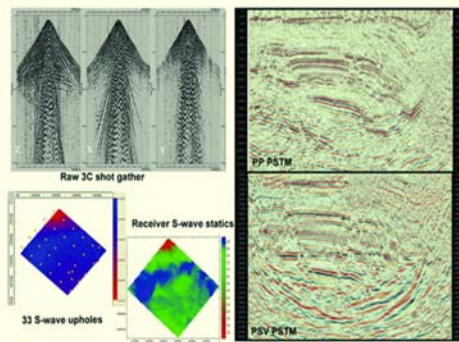
VTI parameters estimation



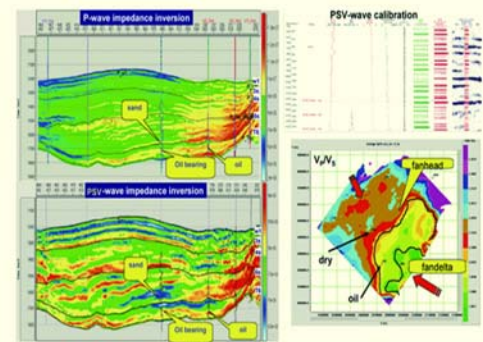
HTI parameters estimation



Borehole and surface seismic for volcanic interpretation



Statics and PSTM contribute to converted wave data imaging



MC data for sand delineation and fan description



中国石油东方地球物理公司
BGP Inc. China National Petroleum Corporation