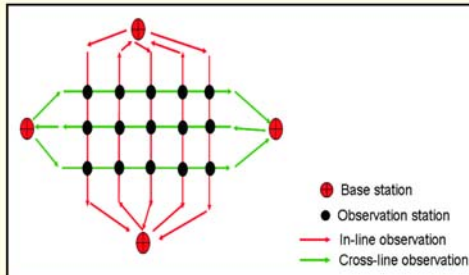


PAI GME3D

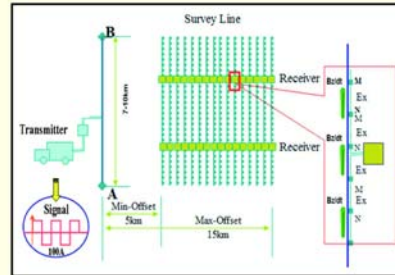
An integrated solution for GME exploration

The PAI-GME3D is an integrated 3D GME package with unique features of high-power TFEM[®], CEMP[®], and borehole-surface TFEM[®], which has been prominently used in hydrocarbon exploration, civil engineering, mining, and environmental assessment. Riding on the coattails of GeoEast[®], the PAI-GME3D enables the geologist to conduct 3D visualization interpretation based upon a wide spectrum of datasets, such as gravity, magnetic, electromagnetic, seismic, and logging, thereby producing a better in-depth knowledge of faults, igneous rocks, and reservoirs.

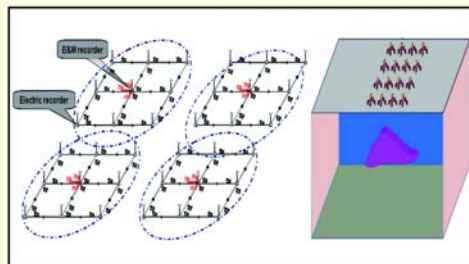
■ Acquisition



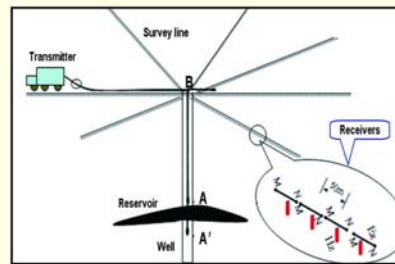
3D Gravity & Magnetic Acquisition with High Density Base-station Net and Repeated Observation[®]



High-power 3D TFEM[®] acquisition



3D small-bin CEMP[®] acquisition

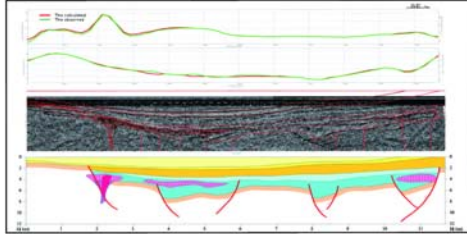


3D Borehole-surface TFEM[®] acquisition

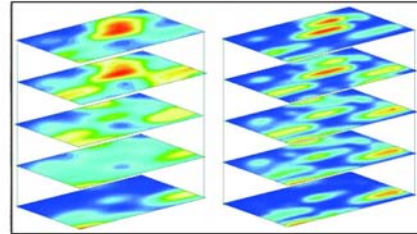


中国石油东方地球物理公司
BGP Inc. China National Petroleum Corporation

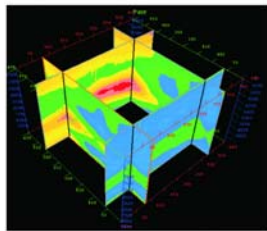
■ Processing



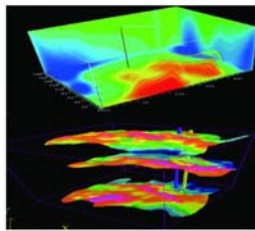
3D gravity formation-separation with constraint of seismic and logging data



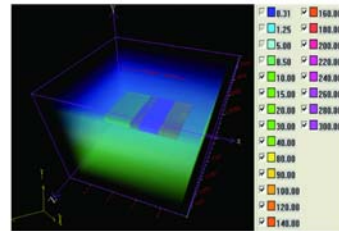
Processing and static corrections of 3D CEMP data



Fast cascaded Inversion of 3D CEMP data

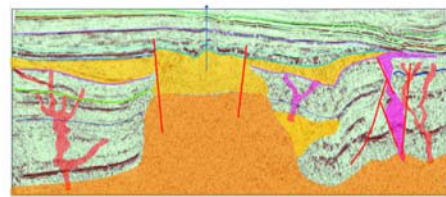
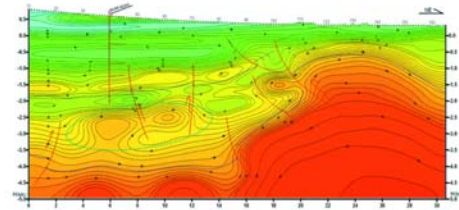


3D Inversion of Apparent Density and Susceptibility

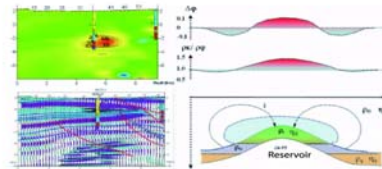


3D inversion of SBL data

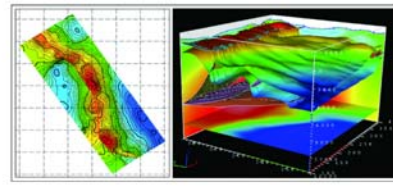
■ Interpretation



Pattern Recognition and Interpretation of Igneous Rocks with Cluster Coding based on gravity, magnetic, electromagnetic, and seismic data.



Hydrocarbon Detection and Monitoring by IPR Anomaly



Integrated 3D visualization interpretation with gravity, magnetic, electromagnetic, and seismic data on GeoEast



中国石油东方地球物理公司
BGP Inc. China National Petroleum Corporation