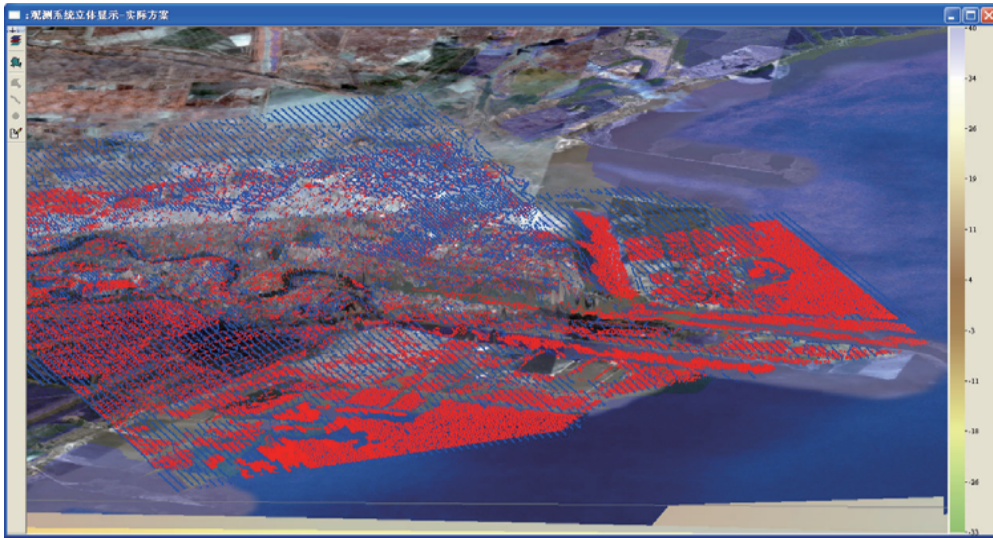
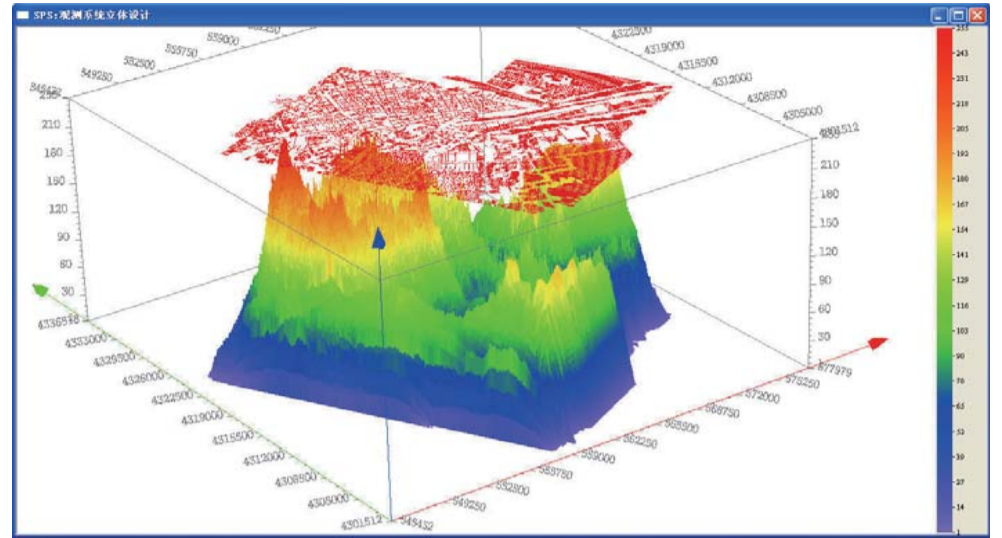


KLSeis Seismic Acquisition Software System

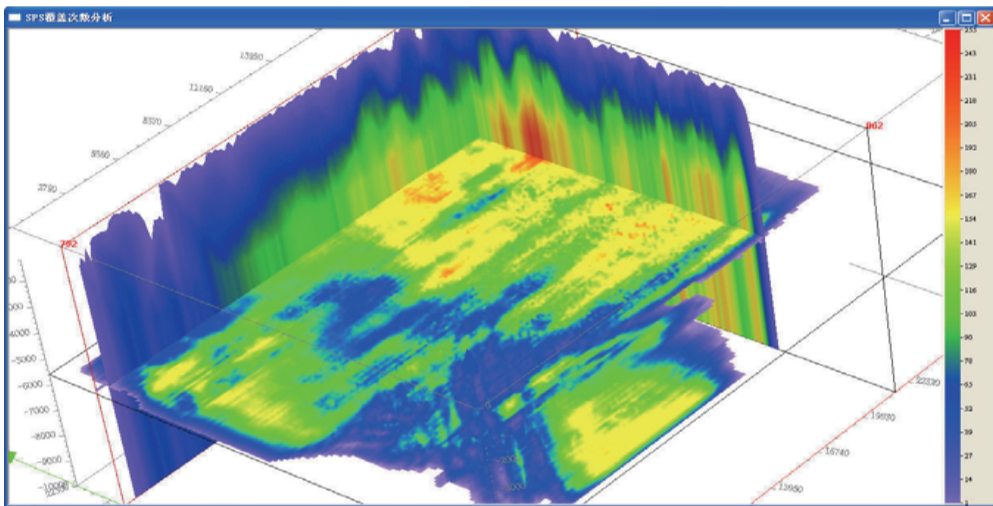
KLSeis is used for 2D/3D survey design and can meet the needs of land, TZ, marine, and VSP operations. It includes bin analysis, geologic modeling, seismic data quality analysis, and static corrections.



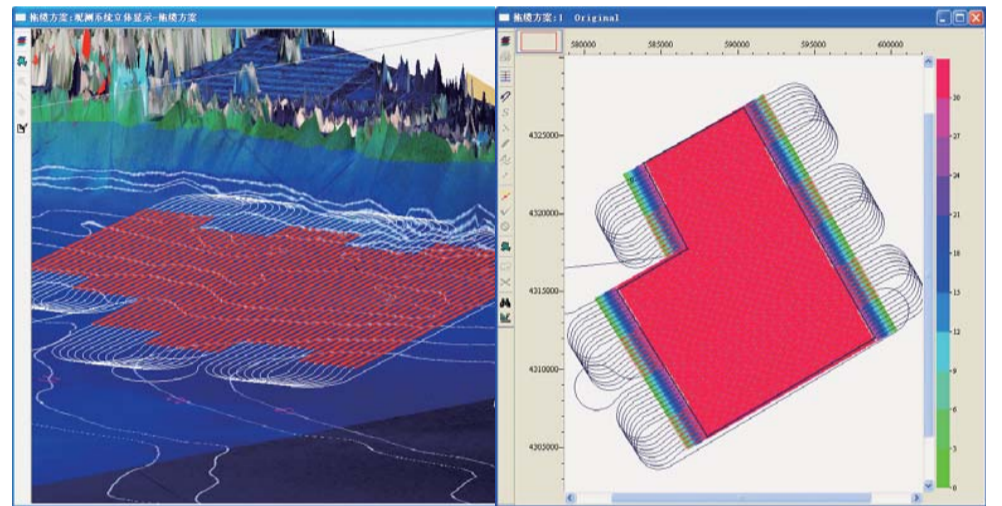
TZ acquisition design and pre-planning



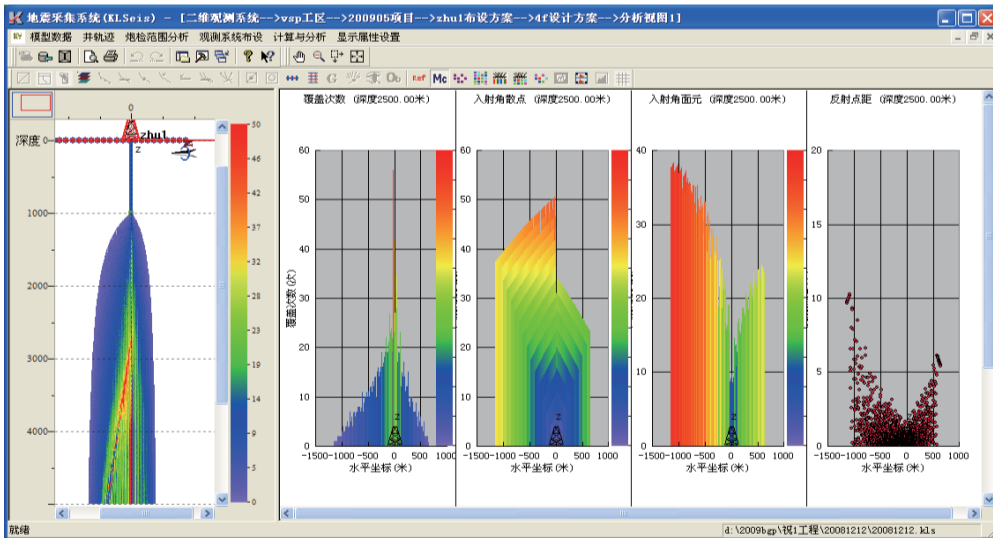
Bin attributes analysis and 3DV



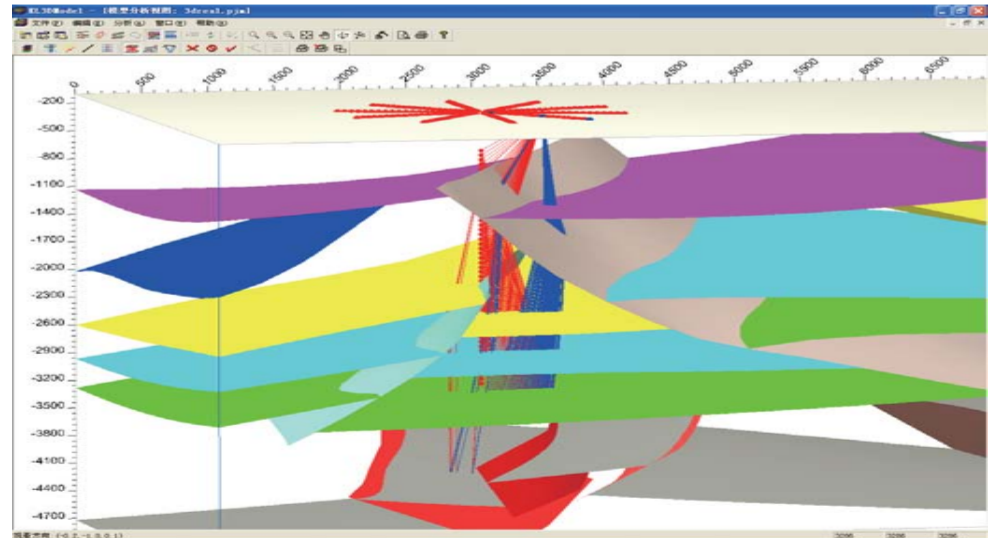
Slice display of 3D fold



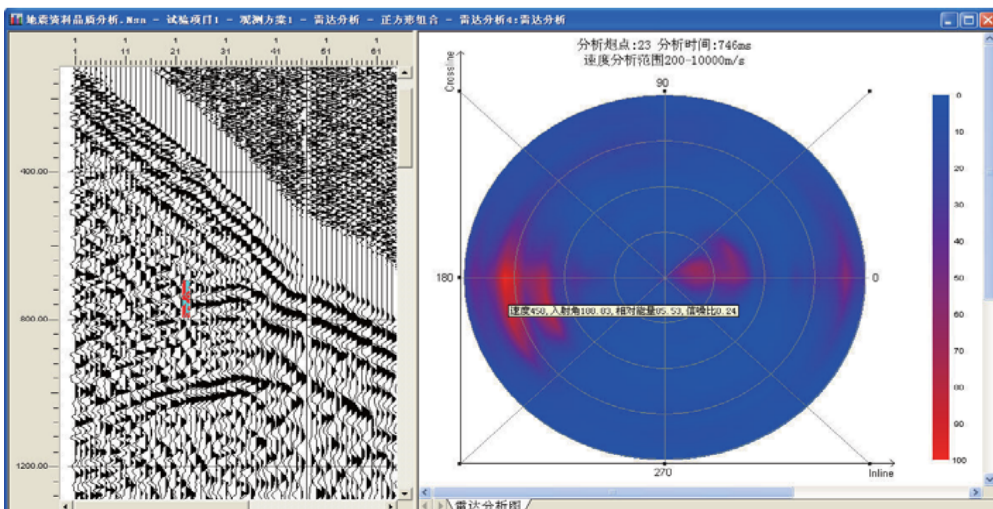
Marine acquisition design and analysis



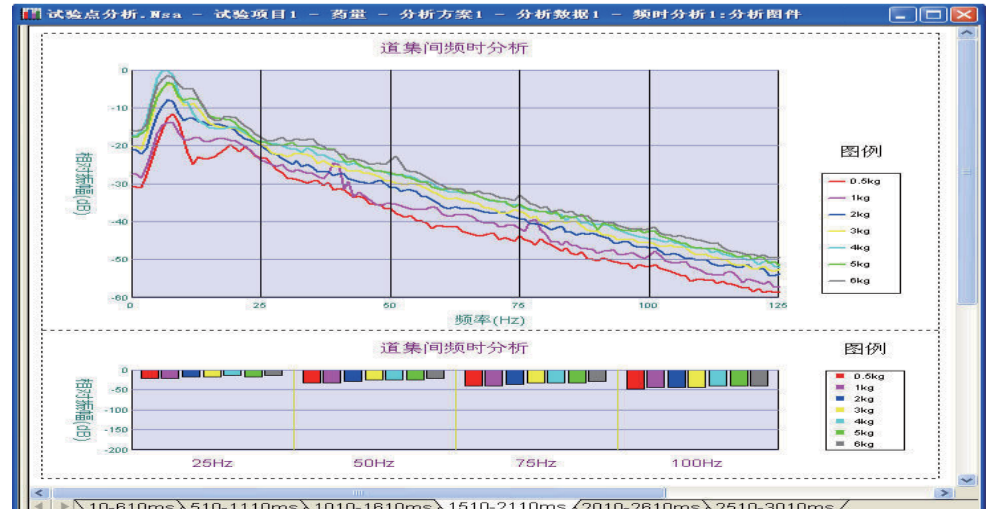
VSP interactive acquisition design and analysis



Ray-tracing for VSP geometry design



Radar analysis



Frequency-time analysis