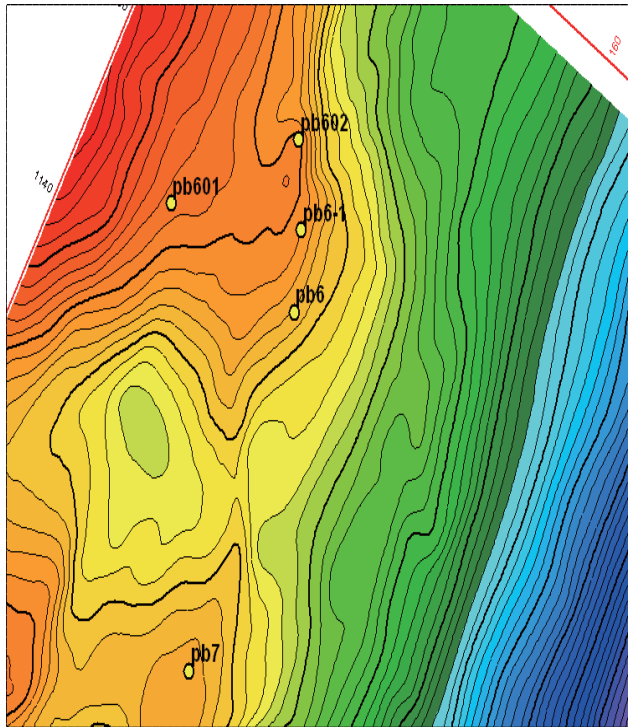
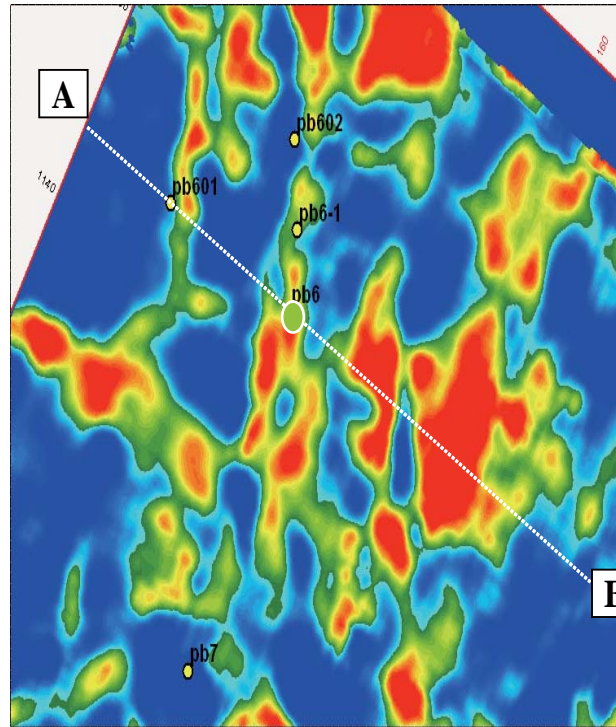


KL Inversion Reservoir Prediction and Integrated Inversion Software System

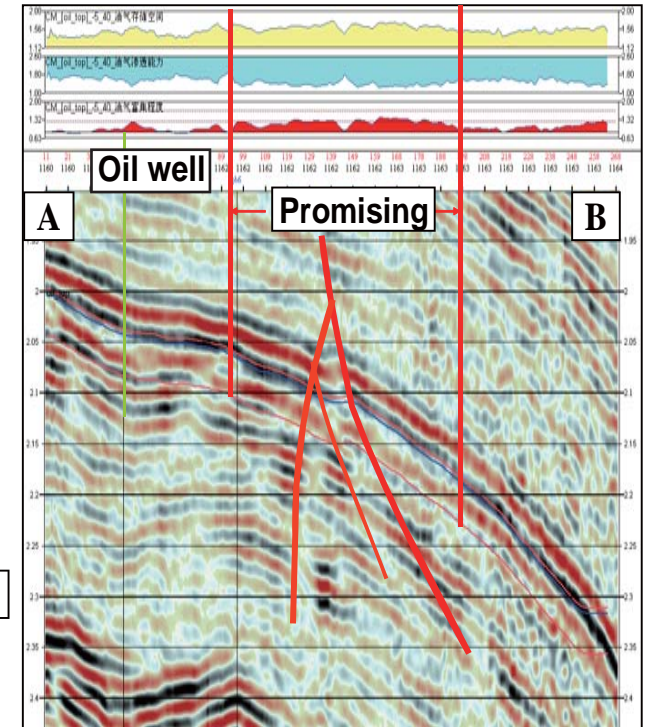
KL Inversion is a dual-phase theory-based and target-oriented reservoir prediction and integrated inversion software. Only stacked data is required with no well constraints. It can be used to find favorable plays in the exploration stage or to detect residual oil in the production stage.



T0 map of the top of an oil-bearing layer



Map view of hydrocarbon detection results



Hydrocarbon detection results and the corresponding cross-well section