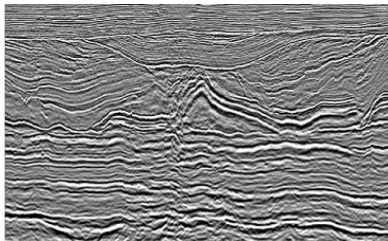


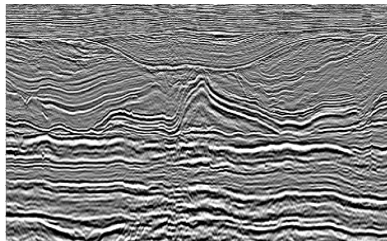
# GeoEast-Lightning — A Pre-stack Depth Migration and Model Building Software System

GeoEast-lightning is a copyrighted one way, two-way, and RTM migration and model building software system.

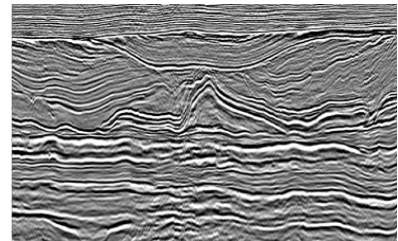
Reverse time PSDM (RTM) is the state-of-the-art seismic imaging technique. With the RTM algorithm, the system ensures high-precision seismic imaging of such complex subsurface structures as buried hills, sub-salts, and fault blocks, including those in strongly varying TTI media. Its technical specifications are in the highest flight among the same kinds of commercial software systems in the world. The system can be used to image both land and marine seismic data.



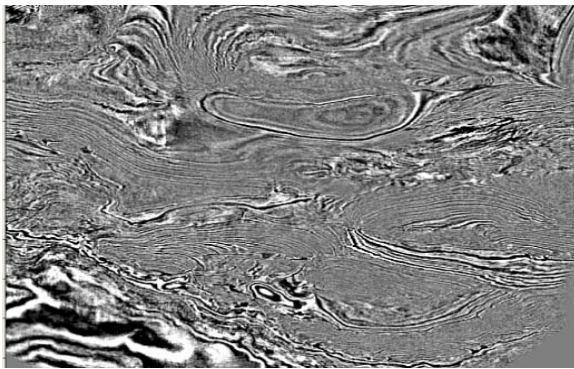
Kirchhoff pre-stack depth migration



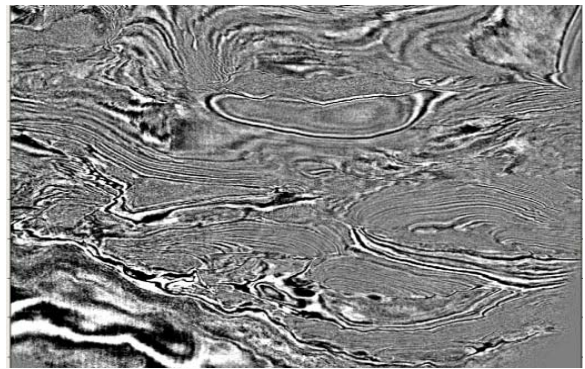
One-way pre-stack depth migration



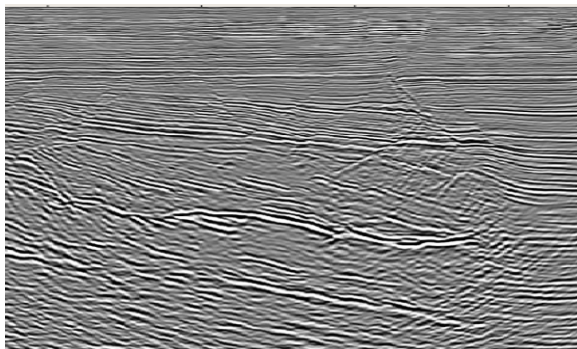
RTM image



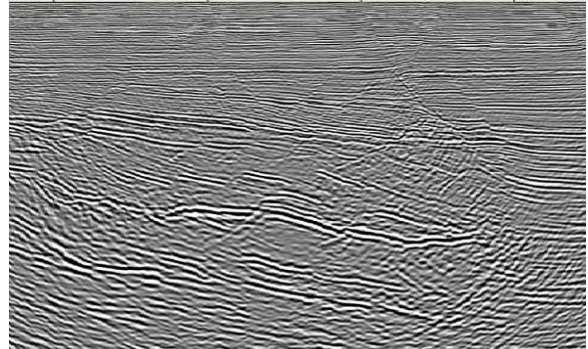
Kirchhoff pre-stack depth migration slice



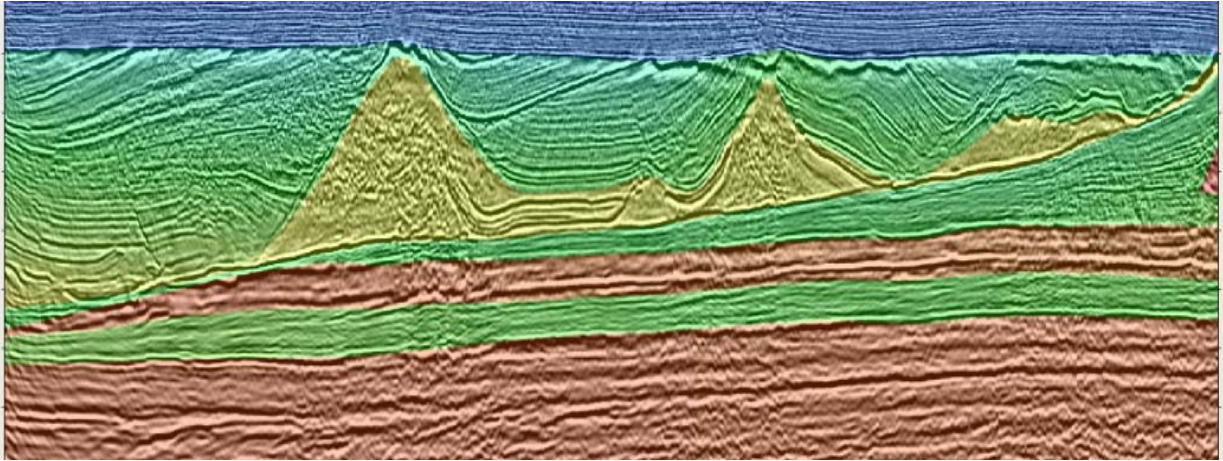
RTM slice



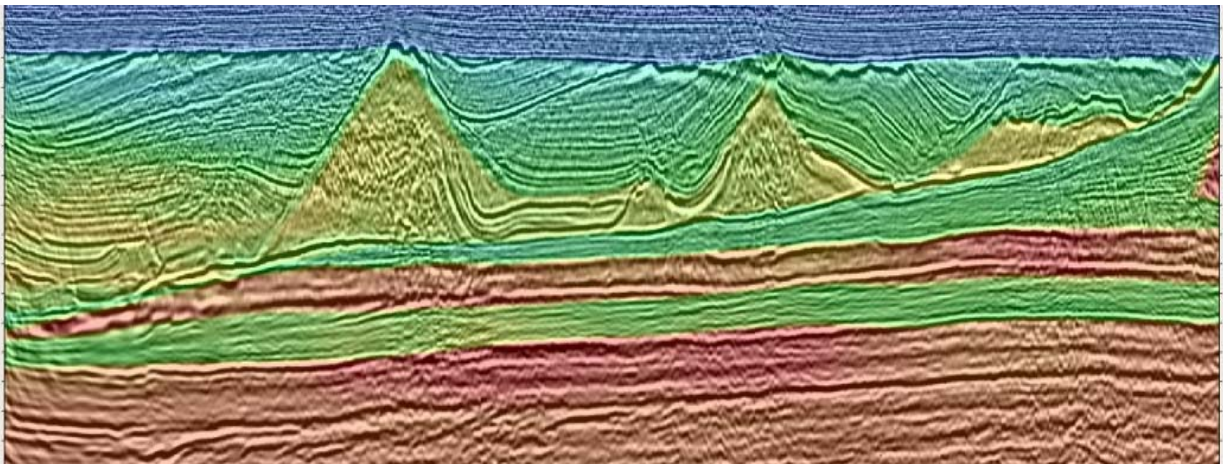
Kirchhoff pre-stack depth migration



RTM image



Superposed display of original V-model and the corresponding RTM image



Superposed display of the V-model updated using tomography and the corresponding RTM image