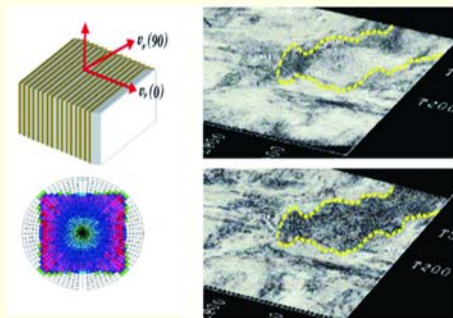


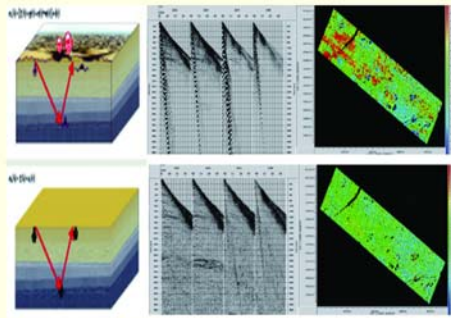


An integrated land reservoir characterization solution

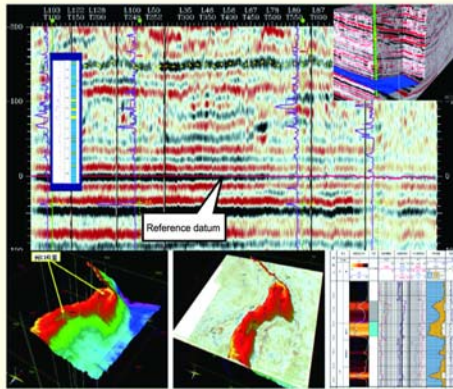
The PAI-LRC provides an integrated solution for land reservoir characterization based on 3D, 3.5D, 4D, and borehole seismic. It helps effectively enhance production of reservoirs whose thickness is less than 1/4 wavelength.



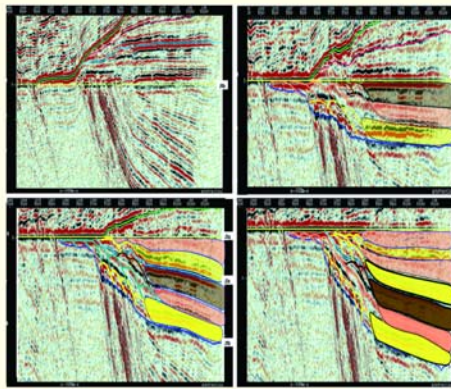
Wide azimuth seismic acquisition



RAP processing



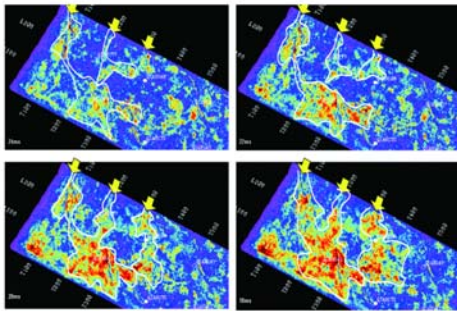
Seismic marker



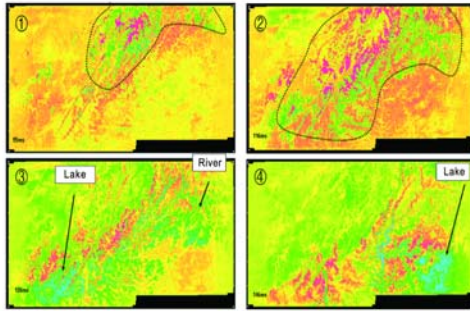
Relative calibration and structural evolution interpretation



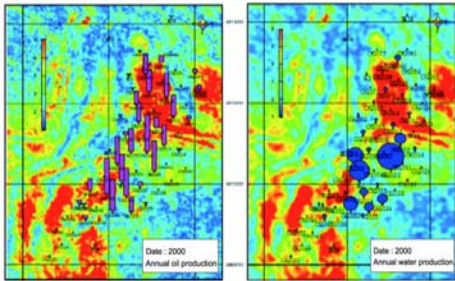
中国石油东方地球物理公司
BGP Inc. China National Petroleum Corporation



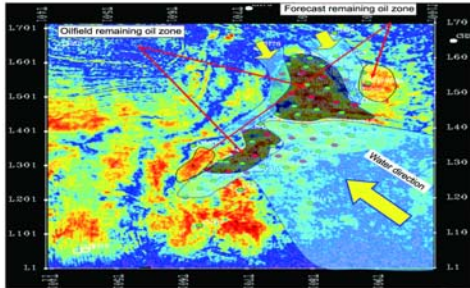
Delta sedimentary evolution interpretation



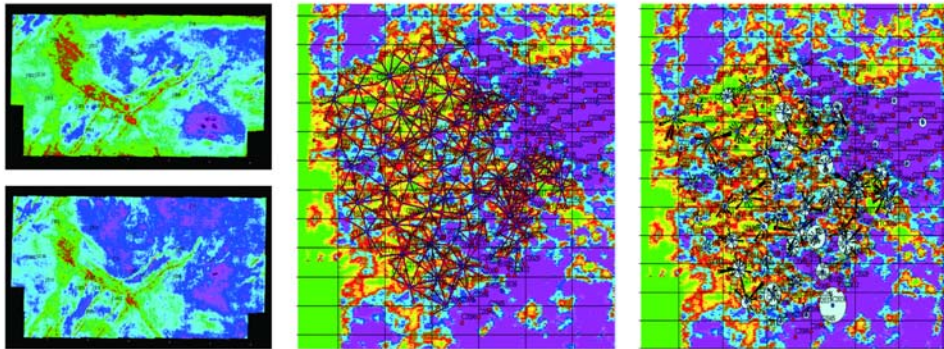
Carbonate sedimentary evolution interpretation



Comprehensive 3.5D seismic exploration



Remaining oil prediction



Time-lapse 3D seismic exploration with different survey parameters



中国石油东方地球物理公司
BGP Inc. China National Petroleum Corporation